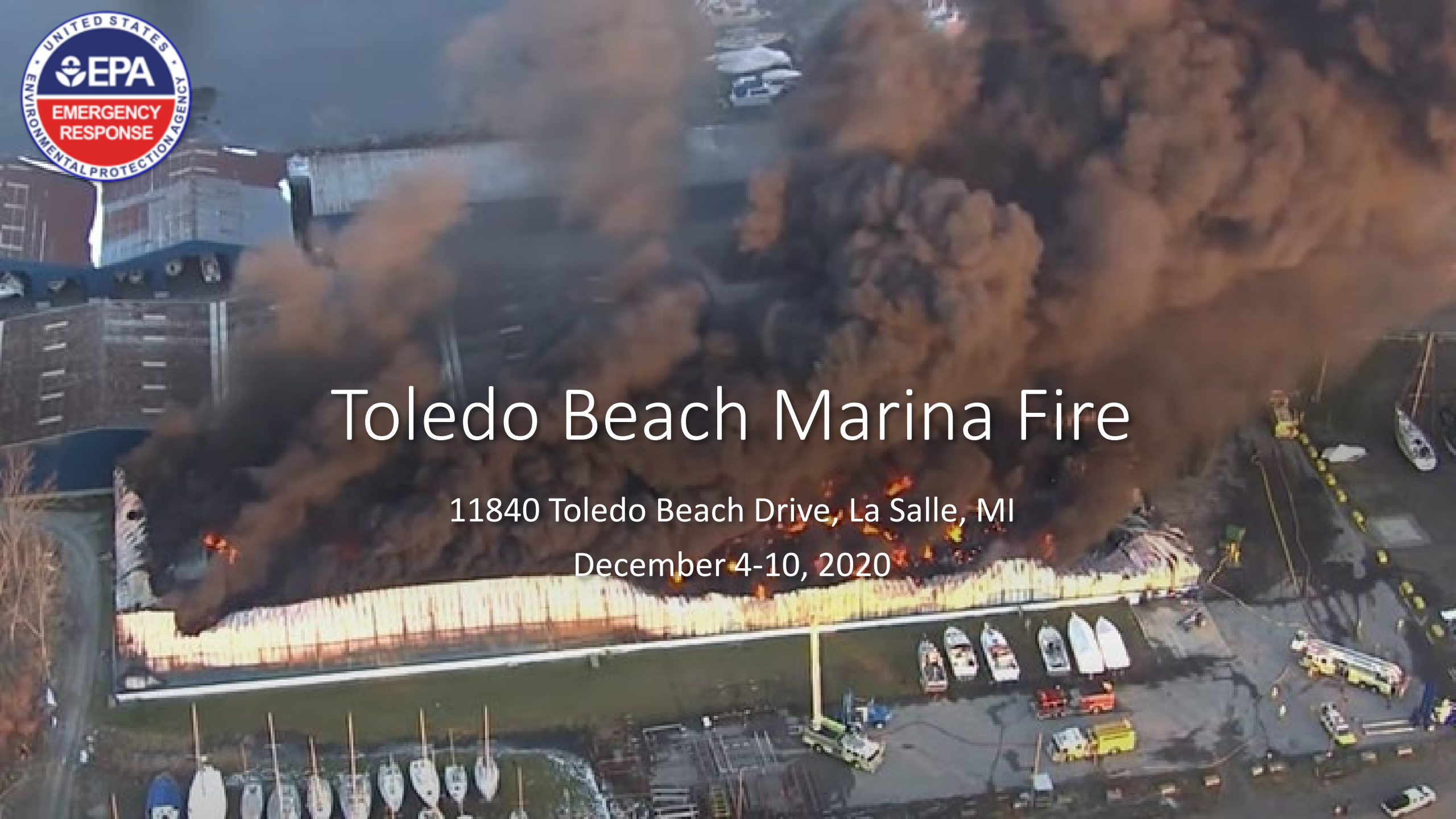




Toledo Beach Marina Fire

11840 Toledo Beach Drive, La Salle, MI

December 4-10, 2020



Toledo Beach Marina Fire

Friday, December 4, 2020

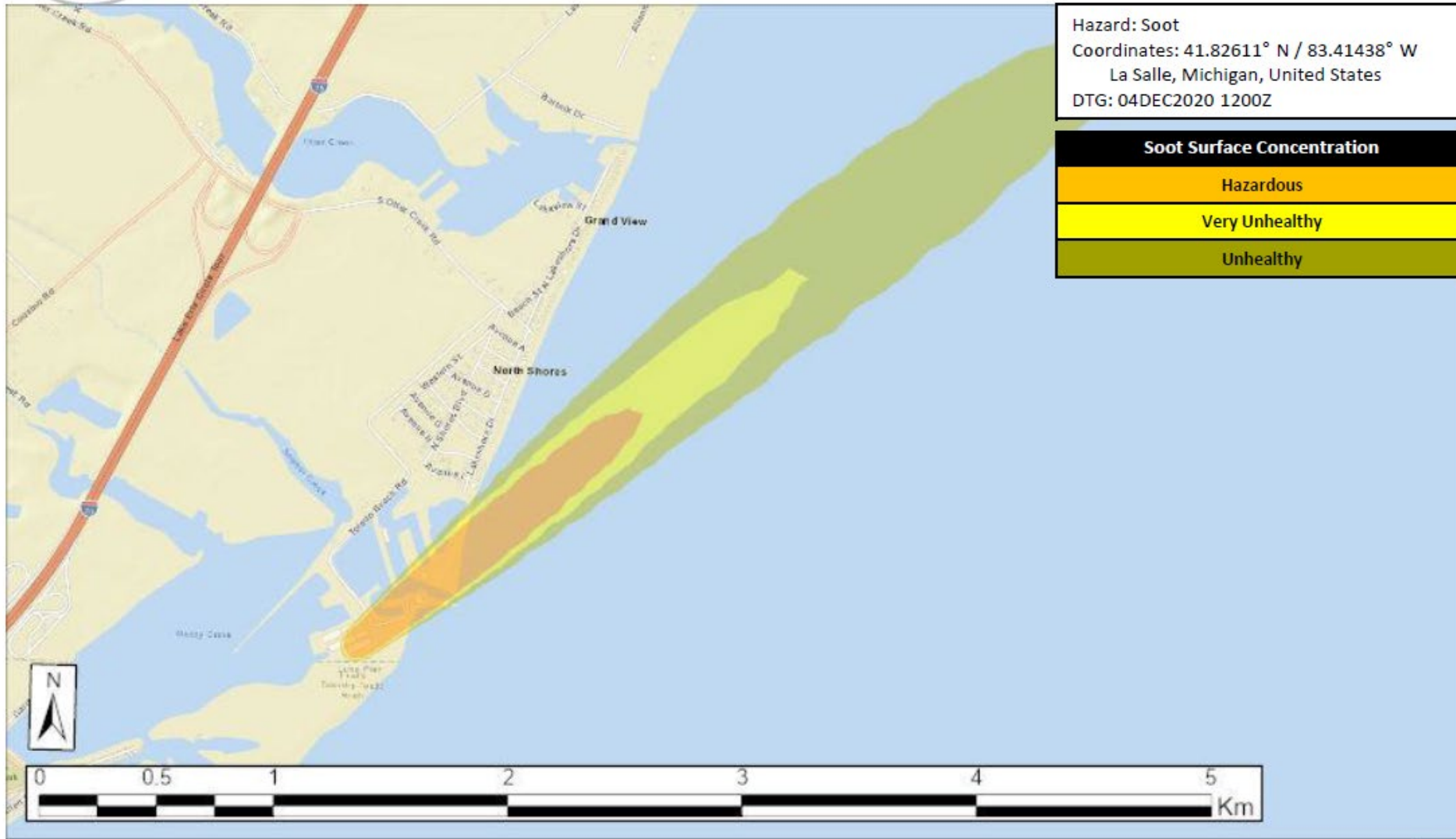
HIGHLIGHTS

- ~0629 Initial 911 calls - Flames visible from I-75
- 0835 USCG – Sector Toledo responding
- 0930 Downriver Emergency Response Team (DERT) – Plume Modeling
- ~1015 DERT Request for assistance
- 1200 EPA – USGC Conference Call
- 1345 NOFI issued
- ~1400 Contacted Environment Canada
- 1545 Contacted USFWS
- 1600 Cleanup Contractor on-site





Soot – Concentration – La Salle, MI – 1100EST















AM-1

AM-4

AM-2

AM-3





























Estimated Fluids Lost

Material	Approx. Gallons/Boat	# Boats	Approx. Gallons
Gasoline	40	61	2,440
Diesel	500	21	10,500
Oil: Engine & Transmission Gas Boats	2.75	61	167.75
Oil: Engine & Transmission Diesel Boats	40	21	840
Coolant / Antifreeze – Gas Boats	4.5	61	274.5
Coolant – Diesel Boats	30	21	630
55 Gallon Drums			
- Oil			55
- Coolant			55
- Hydraulic Fluid			55
		Combined Total:	15,017.25



LEGEND:

- SUBJECT PROPERTY
- CATCH BASIN
- SURFACE FLOW DIRECTION
- AST
- ABOVEGROUND STORAGE TANK
- SURFACE WATER SAMPLE
- SOIL SAMPLE
- SURFICIAL SOIL REMOVAL FROM THIS AREA

PM Environmental & Engineering Services

FIGURE 1A
BOOM, STORM SEWER, AND SAMPLE LOCATION
MAP - RACK AND LAUNCH BUILDING AREA

PROJECT: TOLEDO BEACH MARINA PROPERTY
11840 TOLEDO BEACH ROAD
LA SALLE, MI

DATE: 1/5/2021	DESIGNED BY: CS/KS/CS	SCALE: 1" = 120'
DRAWN BY: JA/AP	CHECKED BY: CS/KS/CS	FILE NAME: 01-10129-2-001 F00R01



LEGEND:

- SUBJECT PROPERTY
-  CATCH BASIN
-  SURFACE FLOW DIRECTION
-  AST
-  SURFACE WATER SAMPLE
-  SOIL SAMPLE
-  SURFICIAL SOIL REMOVAL FROM THIS AREA



PM Environmental & Engineering Services

FIGURE 1B
BOOM, STORM SEWER, AND SAMPLE LOCATION MAP - HARBOR AREA

PROJECT: TOLEDO BEACH MARINA PROPERTY
11840 TOLEDO BEACH ROAD
LA SALLE, MI

DESIGNED BY: CS/KS/CS	CHECKED BY: JA/AP	DATE: 1/5/2021
SCALE: 1" = 120'	FILE NAME: 01-10129-2-001.F00001	

QUESTIONS?

OSC Tricia A. Edwards
USEPA

Edwards.Tricia@epa.gov

(734) 740-9016

